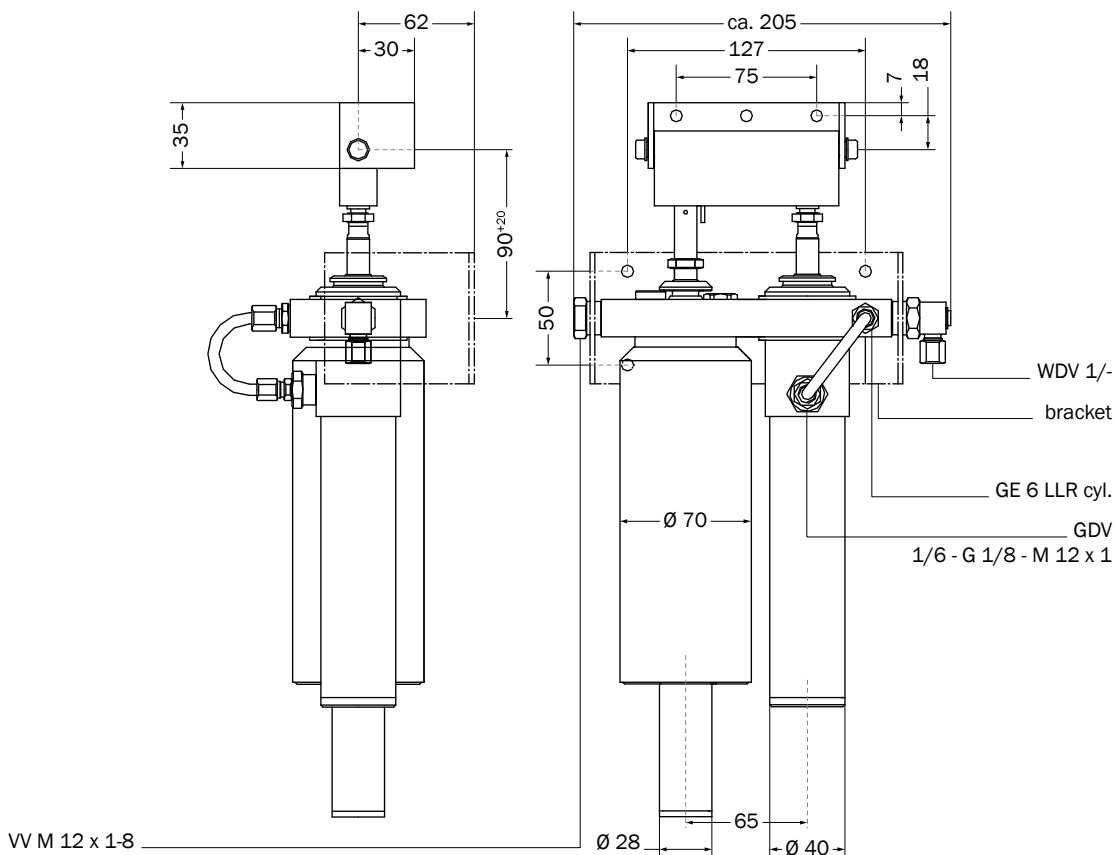
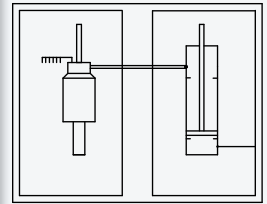


Order designation: Combi triggering JM - B - 500 - stroke - type + PZ 32 - 35 - AH
Example: Combi triggering JM - B - 500 - 300 - 0 + PZ 32 - 35 - 600



Circuit diagram motor opener
→chapter 11, page 05-__



The combi triggering consists of the motor opener JM-B-500-stroke-type and the pneumatic lock cylinder PZ 32-39-AH.

The motor opener has the advantage of the continuous ventilation of a skylight, irrespectively of the air power. Due to the corresponding pneumatic cylinder the ventilation equipment is also a smoke extraction device which runs on air power or CO₂ "Open".

Function of motor opener

motor opener JM – type 0	→chapter 11.1, page 291, "Motor Opener JM Type 0"
motor opener JM – type L	→chapter 11.1, page 292, "Motor Opener JM Type L"
motor opener JM – type LS	→chapter 11.1, page 293, "Motor Opener JM Type LS"

Function of pneumatic cylinder

With pneumatic pressurization of the cylinder the motor opener is disengaged from the lock. The cylinder stroke reaches the SHEV position.

alarm stroke (AH)	optional, but longer than the motor stroke
connections	M 12 x 1 (other upon request)
design	piston rod cylinder
piston diameter	32
piston rod diameter	12
max. static operating pressure	60 bar
medium	a) filtered, dry and unooled compressed air according to DIN ISO 8573-1 b) CO ₂
maintenance	no, only visual control (dirty piston rod, etc.)
materials	aluminum, niro, Perbunan

bracket for combi triggering	→chapter 6.2, page 229, "Bracket for Combi Trigger"
------------------------------	---

Short description

Technical data

Accessories