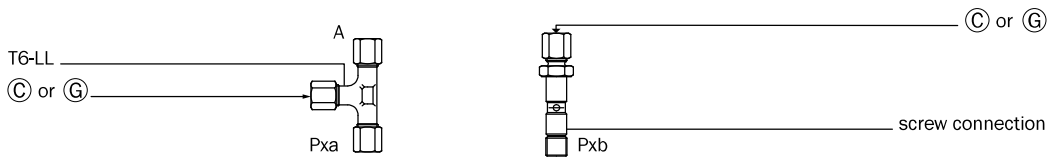
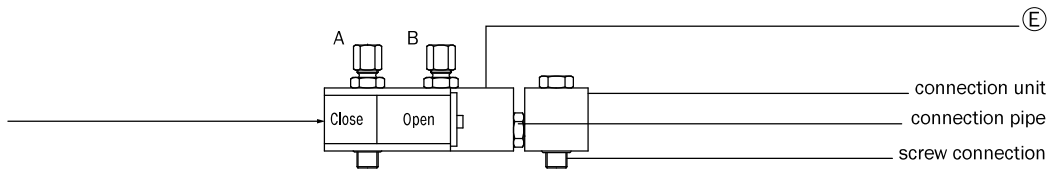


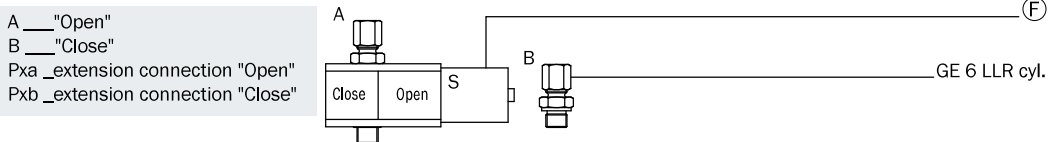
Operating manual for CO₂-triggers including accessories.
Remote triggers are not tested in accordance with VdS.



CO₂ trigger 73
with reversing valve and visual display for the connection of a CO₂ extension

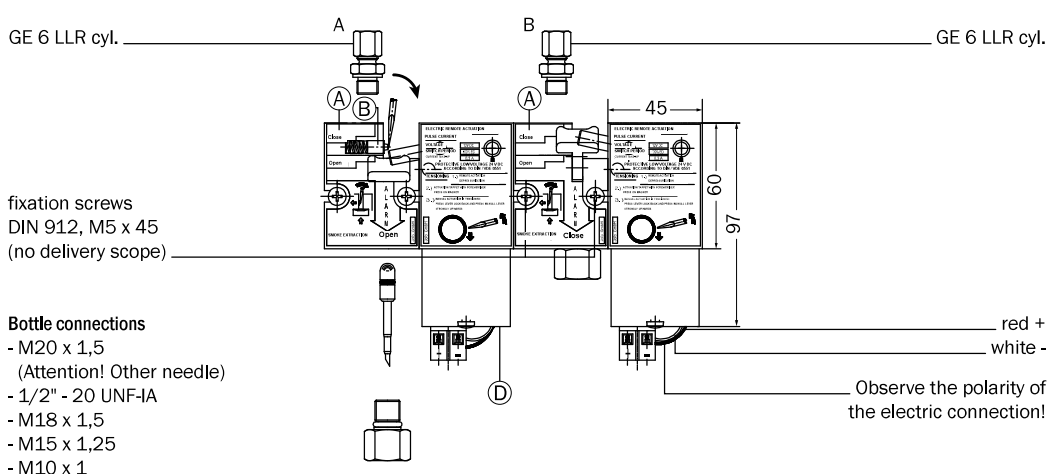


CO₂ trigger 74
with reversing valve and visual display



CO₂ trigger_Vi
Additional design for type 70 - 72

A ___ "Open"
B ___ "Close"
Pxa ___extension connection "Open"
Pxb ___extension connection "Close"



CO₂ trigger 72
("Open/Close")

(A) CO₂ manual trigger

Opens by pressing the manual lever the CO₂-bottle under it.

(B) Lever lock

When activated and the bottle is unopened, it maintains the manual lever in the lower position.

(C) Connection with CO₂-trigger auxiliary cap unit

Opens pneumatically (by the pressurization of the CO₂ manual actuator) the CO₂-bottle screwed in below the same (→chapter 02, page 34, "Auxiliary Cap Unit CO₂-Trigger").

(D) Remote trigger

Is actuated electrically or pneumatically by a remote control unit and upon activation it presses the manual lever of the CO₂ manual trigger (optionally available).

(E) CO₂ reversing valve with visual display

For the automatic ventilation of the opposite direction (only with "Open" and "Close") and the visual display of the trigger which has last been triggered ("Open"/"Close").

Operation: If "B" ("Close") is pressurized and the CO₂-bottle is removed, the valve slide is pushed back by a spring.

(F) Single pipe-visual display

Displays in operational condition "Close" and in triggered condition "Open". When the emptied CO₂-bottle is screwed out from "Open", the visual display shows again "Close", if there is sufficient return air from the "Open" conduct.

(G) Connection of CO₂ extension

A second trigger (without reversing valve) with the same amount of CO₂ volume can be connected.

Concepts and instructions