

Order designation: PVZ piston diameter - 06 - stroke - eyebolt
 Example: PVZ 40 - 06 - 300 - M8 x 40 / Ø 6,1

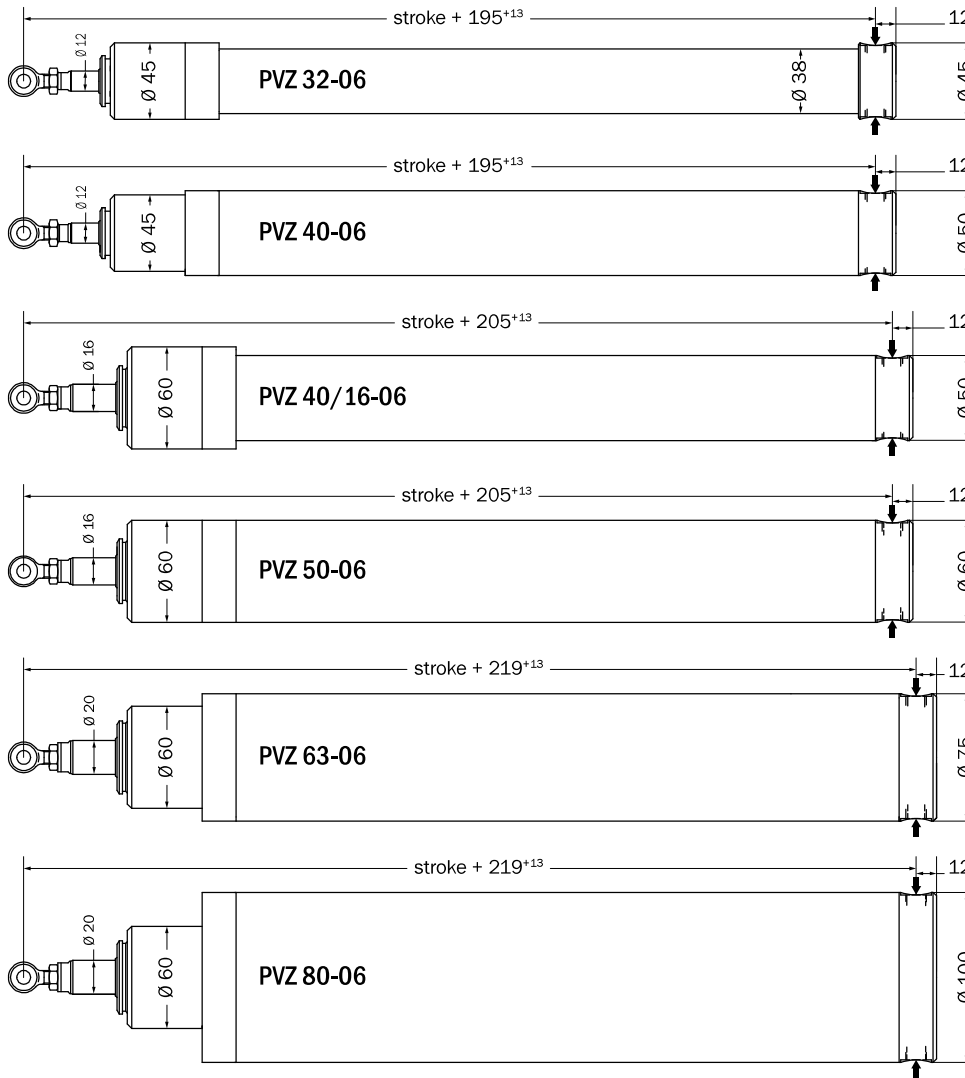
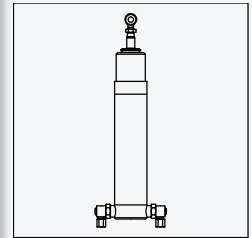
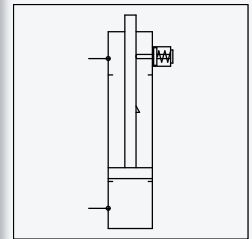


Illustration cylinder type 06



Circuit diagram cylinder type 06



By the pressurization of a "cylinder side" with simultaneous pressure release of the other "cylinder side" a shear/tensile force is performed. Once the piston has reached its end position (extended piston rod) the locking of the piston rod is performed.

Short description

connection	M 12 x 1 (cylinder base)
eyebolt	M8 x 40 / Ø 6,1 or Ø 8,1 (other eyebolts possible)
stroke	according to selection
VdS number	G 502008 (up to 1 100 mm stroke)

Technical data

→chapter 6.1, page 205, "Zubehör Übersicht"

connection	→chapter 6.1, page 206
pivot support	→chapter 6.2, page 221, "Pivot Support"
bracket	→chapter 6.2, page 226
pipe bracket connection	→chapter 6.2, page 224 and page 225
front bracket	→chapter 6.2, page 223, "Front Bracket"

Accessories