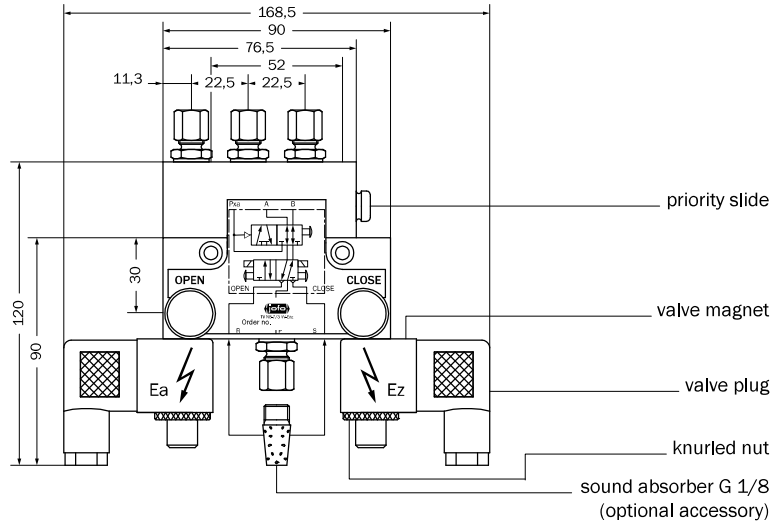
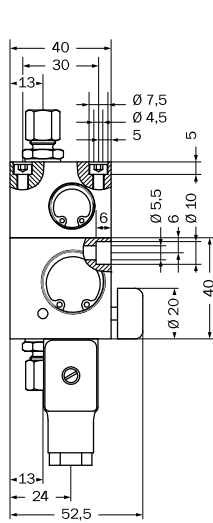
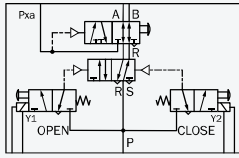




Order designation: TV N_-7/3 W-Eaz ___ V _C
Example: TV N6-7/3 W-Eaz 24 VDC



Short description

The cylinder line pressurized with air power is vented until the counter-pulse and then vented. Additionally, the valve has an absolute priority control of CO₂ "Open".

Operation

By the activation of the corresponding pushbutton or an electric pulse on the valve magnet the required cylinder line is pressurized with air power. When Pxa "Open" is pressurized the priority slide is activated by a manual trigger. This blocks the air power. After the venting of Pxa "Open" the priority slide must be repositioned manually.

Technical data

medium	a) filtered, dry and unooled compressed air according to DIN ISO 8573-1 b) CO ₂	
operating pressure	a) air power 2 – 12 bar b) CO ₂ 12 – 60 bar	
test pressure	CO ₂ 90 bar	
nominal passage	500 NL/min (with pipe diameter 6 x 1 mm)	
connection thread	G 1/8	
DC voltage	normal voltage 12 V, 24 V	valve magnet according to DIN 0580
AC voltage	normal voltage 230 V/50 Hz	
power consumption	DC voltage 4,5 W AC voltage 10/8 VA	electr. plug connection according to DIN 43650 protection class for electr. plug connection IP 65
max. duty cycle	100 % ED	
protection class	IP 54	
VdS number	G 510005	
ambient temperature	-25 °C to +55 °C	
mounting position	preferred	
materials	aluminum, niro, Perbunan sealings	
maintenance	no	
TV N6-7/3 W-Eaz ___ V _C	connection G 1/8, pipe Ø 6 mm	
TV N8-7/3 W-Eaz ___ V _C	connection G 1/8, pipe Ø 8 mm	

Accessories

valve boxes	→chapter 4.5, page 125, "Valve Boxes"
sound absorber	→chapter 4.5, page 127, "Valve Boxes and Door Variants" optional