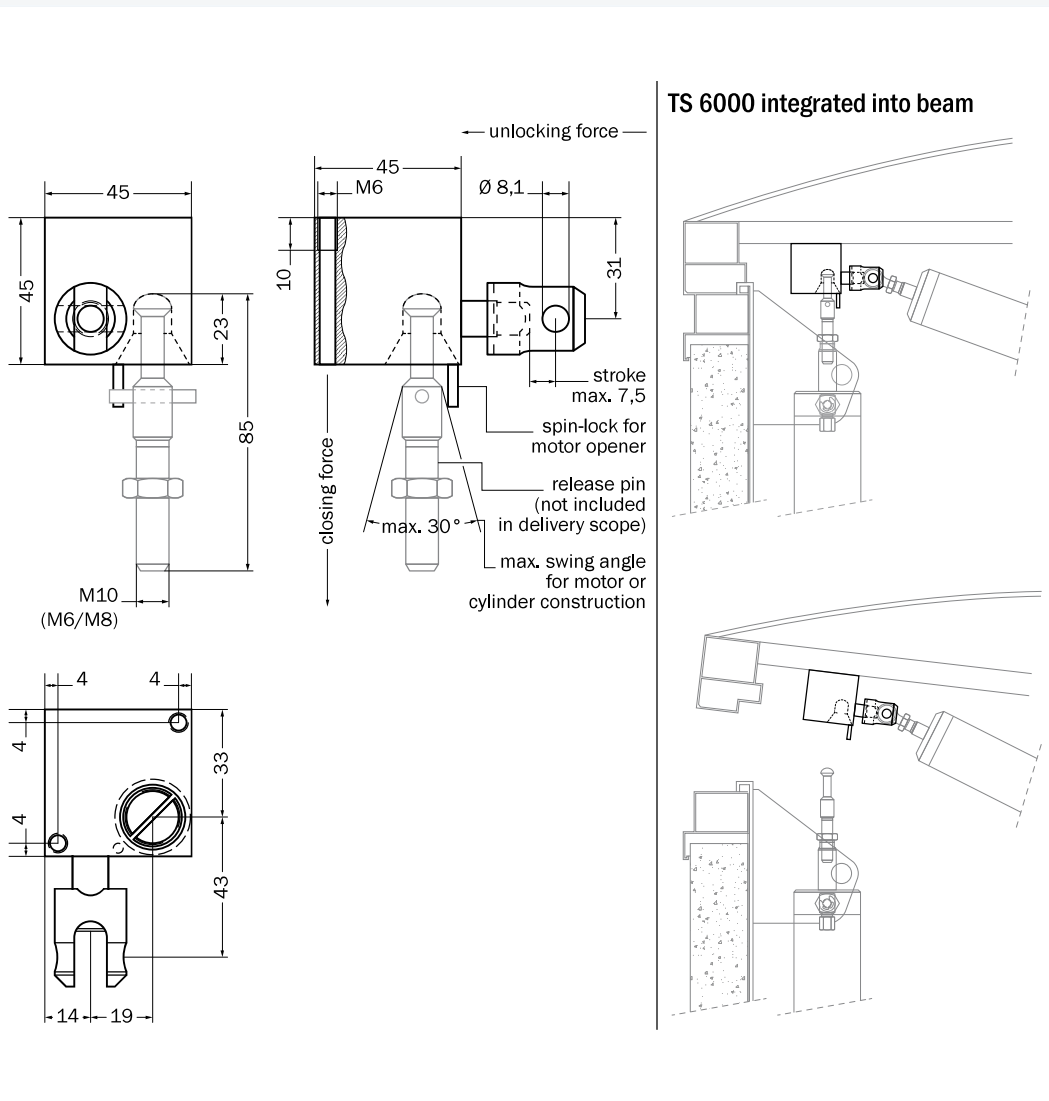


Order designation: **Traverse lock TS 6000**

**Short description**

The traverse lock TS 6000 is implemented for the smoke and heat ventilation control. As soon as pressure is exercised onto the clevis, the release pin is automatically released by the traverse lock.

For the re-engagement it should be noted that the ventilation cylinder or electrical motor opener is vertically suspended in the retracted position. In this case the light dome must be lightly pressed and the flap is locked again.

**Technical data**

release force	min. 280 N
ambient temperature	-20 °C to +60 °C
environmental class	according to VdS 2579 environmental class III (-25 °C to +110 °C)
VdS number	G 591018
maintenance	no
materials	aluminum, niro
closing force	max. 4 000 N

**Accessories**

release pins M6, M8 and M10 x 85 (other lengths upon request)	→chapter 12, page 495, "Release Pin"
------------------------------------------------------------------	--------------------------------------