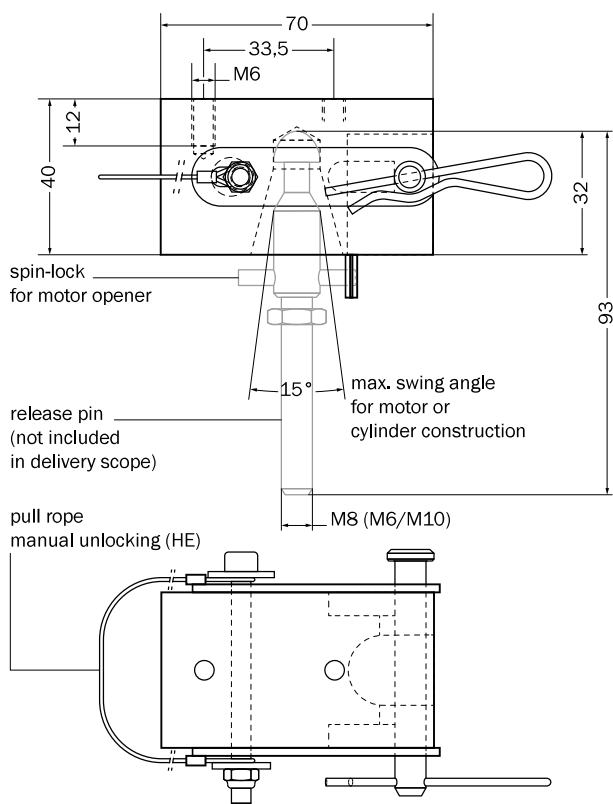
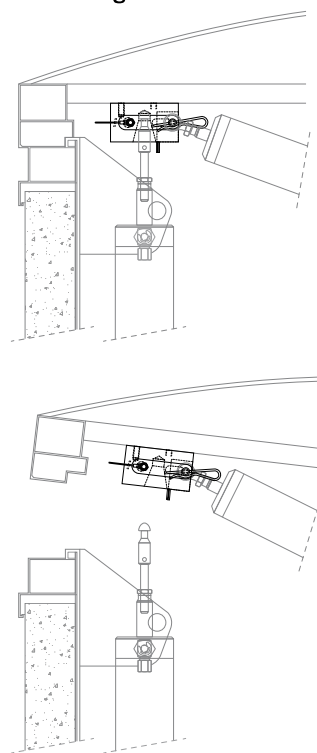


Order designation: **Traverse lock TS 2000 / HE cable - \_\_\_ mm**  
 Example: **Traverse lock TS 2000 / HE cable - 550 mm**


**TS 2000 integrated into beam**

**Short description**

The traverse lock TS 2000 is implemented for the smoke and heat ventilation control. As soon as pressure is exercised onto the TS 2000 (by the smoke and heat ventilation control cylinder), the release pin is automatically released by the traverse lock. Another possibility for releasing the lock is the manual release. The wire rope is reached and pulled from the outside.

For the re-engagement it should be noted that the ventilation cylinder or electrical motor opener is vertically suspended in the retracted position. In this case the light dome must be lightly pressed and the flap is locked again.

**Technical data**

operating temperature	according to VdS 2579 Environmental class III (-25 °C to +110 °C)
release force	min. 50 N
rope length	Standard 550, 650, 1000 (others upon request)
ambient temperature	-20 °C to +60 °C
VdS number	G 502026
maintenance	no
materials	aluminum, niro, steel galvanized, Perbunan
closing force	max. 4500 N

**Accessories**

release pins M6 x 82, M8 x 125 and M10 x 93 (other lengths upon request) →chapter 12, page 495, "Release Pin"