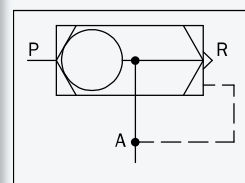
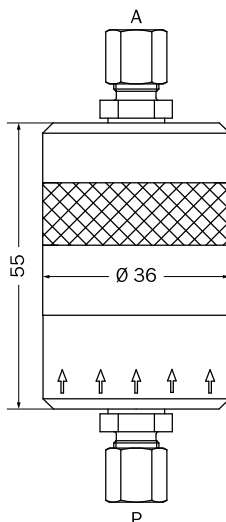


Order designation: Quick exhaust valve___
Example: Quick exhaust valve 06



With the quick exhaust valve shorter venting times in pressurized systems can be achieved. Cylinders "drive" faster when the exhaust air side is vented faster.

The quick exhaust valve should be integrated in the proximity of the greatest volume for venting (cylinder). If required, also various quick exhaust valves can be implemented. The pressure medium passes through the quick exhaust valve from "P" to "A" in the direction of the cylinder. The "R" venting is closed. If the pressure decreases in "P", "A" is vented after "R".

Short description

| | |
|---------------------------------|---|
| nominal width | 6 mm |
| medium | a) filtered, dry and unoiled compressed air according to DIN ISO 8573-1 b) CO ₂ |
| max. allowed operating pressure | 60 bar |
| test pressure | 90 bar |
| minimum switch pressure | 2 bar |
| materials | aluminum, sealings Perbunan |
| maintenance | no |
| ambient temperature | -20 °C to +60 °C |
| connections | G 1/8 |
| design | poppet valve |

Order designation

| | |
|------------------------|-------------------------------|
| quick exhaust valve 06 | connection G 1/8, pipe Ø 6 mm |
| quick exhaust valve 08 | connection G 1/8, pipe Ø 8 mm |

Technical data

connections →chapter 6.1, page 203

Other connections upon request.

Accessories