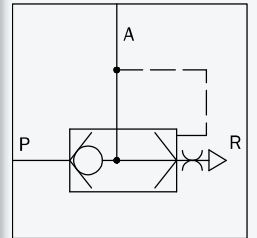
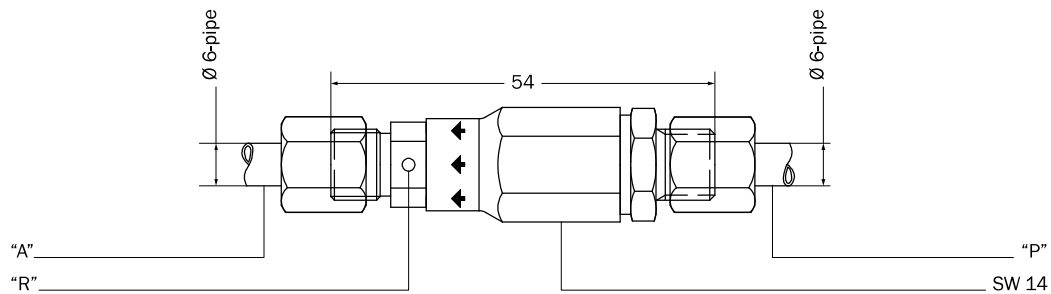


Order designation: EVR 06



The exhaust valve vents the entire pipe system. For the venting of pressure "A", "P" is depressurized. The venting via "R" is performed with a pressure "P" \leq 3 bar .

Short description

design	poppet valve
operating pressure	max. 60 bar
weight	0,1 kg
medium	a) filtered, dry and unoiled compressed air according to DIN ISO 8573-1 b) CO ₂
minimum switch pressure	3 bar
nominal width	1,8 mm
test pressure	90 bar
ambient temperature	-20 °C to +60 °C
maintenance	no
materials	brass, galvanized steel, Perbunan

Technical data