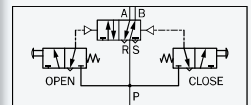
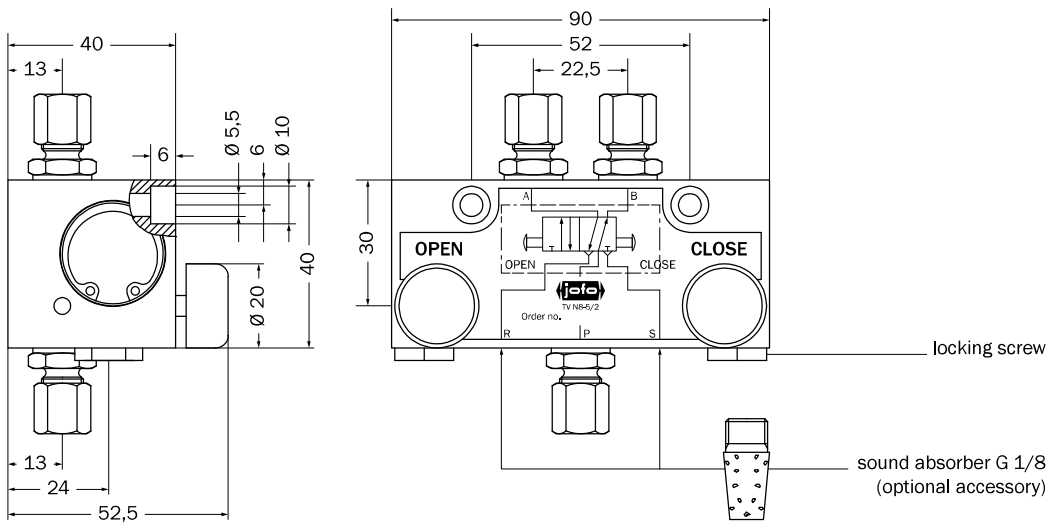


Order designation: TV N_-5/2
 Example: TV N6-5/2



The cylinder line pressurized with air power is vented until the counter-pulse and then vented.

Short description

When the corresponding pushbutton is activated the required cylinder line is pressurized with air power.

Operation

medium	a) filtered, dry and unoled compressed air according to DIN ISO 8573-1 b) CO ₂
operating pressure	air power 2 – 12 bar
nominal passage	500 NL/ min (with pipe diameter 6 x 1 mm)
connection thread	G 1/8
ambient temperature	-20 °C to +50 °C
mounting position	preferred
materials	aluminum, niro, Perbunan sealings
maintenance	no
TV N6-5/2	connection G 1/8, pipe Ø 6 mm
TV N8-5/2	connection G 1/8, pipe Ø 8 mm

Technical data

valve boxes	→chapter 4.5, page 125, "Valve Boxes"
sound absorber	→chapter 4.5, page 127, "Valve Boxes and Door Variants" optional

Accessories