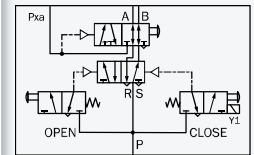
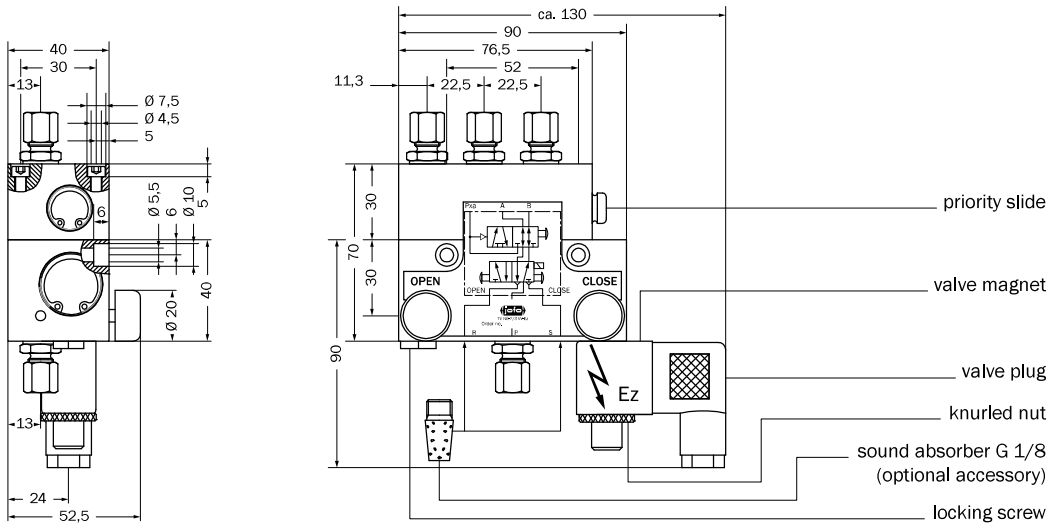


Order designation: TV N_-7/3 WV-Ez ___ V _C
 Example: TV N6-7/3 WV-Ez 24 VDC



The cylinder line pressurized with air power is vented until the counter-pulse and then vented. Additionally, the valve has an absolute priority control of CO₂ "Open".

Short description

When the corresponding pushbutton is activated the cylinder line "A" is pressurized with air power. By the mechanic counter-pulse or voltage drop on the valve magnet the cylinder line "B" is aerated and the cylinder line "A" is vented. Also by an electric pulse on the valve magnet, the cylinder line "B" can be pressurized with air power. When Pxa "Open" is pressurized the priority slide is activated by a manual trigger. This blocks the air power. After the venting of Pxa "Open" the priority slide must be repositioned manually.

Operation

medium	a) filtered, dry and unoled compressed air according to DIN ISO 8573-1 b) CO ₂	
operating pressure	a) air power 2 – 12 bar b) CO ₂ 12 – 60 bar	
test pressure	CO ₂ 90 bar	
nominal passage	500 NL/min (with pipe diameter 6 x 1 mm)	
connection thread	G 1/8	
DC voltage	normal voltage 12 V, 24 V	valve magnet according to DIN 0580
AC voltage	normal voltage 230 V/50 Hz	
power consumption	DC voltage 4,5 W AC voltage 10/8 VA	electr. plug connection according to DIN 43650 protection class for electr. plug connection IP 65
max. duty cycle	100 % ED	
protection class	IP 54	
VdS number	G 510005	
ambient temperature	-25 °C to +55 °C	
mounting position	preferred	
materials	aluminum, niro, Perbunan sealings	
maintenance	no	

Technical data

TV N6-7/3 WV-Ez ___ V _C	connection G 1/8, pipe Ø 6 mm
TV N8-7/3 WV-Ez ___ V _C	connection G 1/8, pipe Ø 8 mm

valve boxes	→chapter 4.5, page 125, "Valve Boxes"
sound absorber	→chapter 4.5, page 127, "Valve Boxes and Door Variants" optional

Accessories