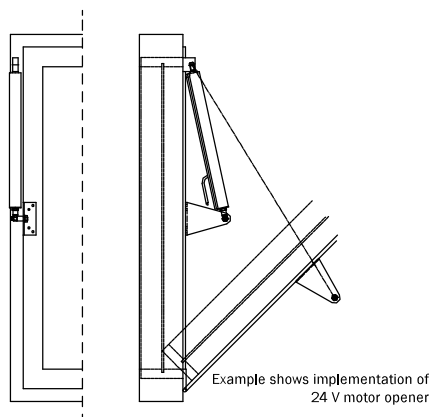
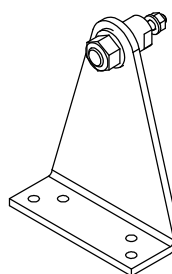
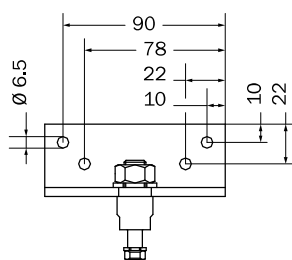
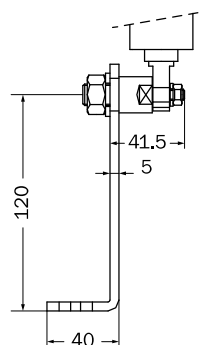
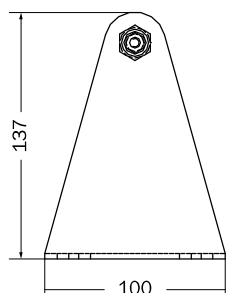


Order designation: WK 1 - \_  
Example: WK 1 - 6



The angle bracket WK 1 can be used as a take-up for a 24 V motor opener or for a pneumatic cylinder (preferably implementation of tilt-wings).

The angle bracket of galvanized steel is installed at a depth not exceeding the half of the window height.

## Short description

Size „d“	Order designation
Ø 6 (for 6th eyebolt)	WK 1-6
Ø 8 (for 8th eyebolt)	WK 1-8
material	galvanized steel, niro

## Technical data