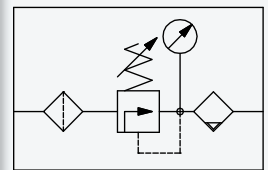
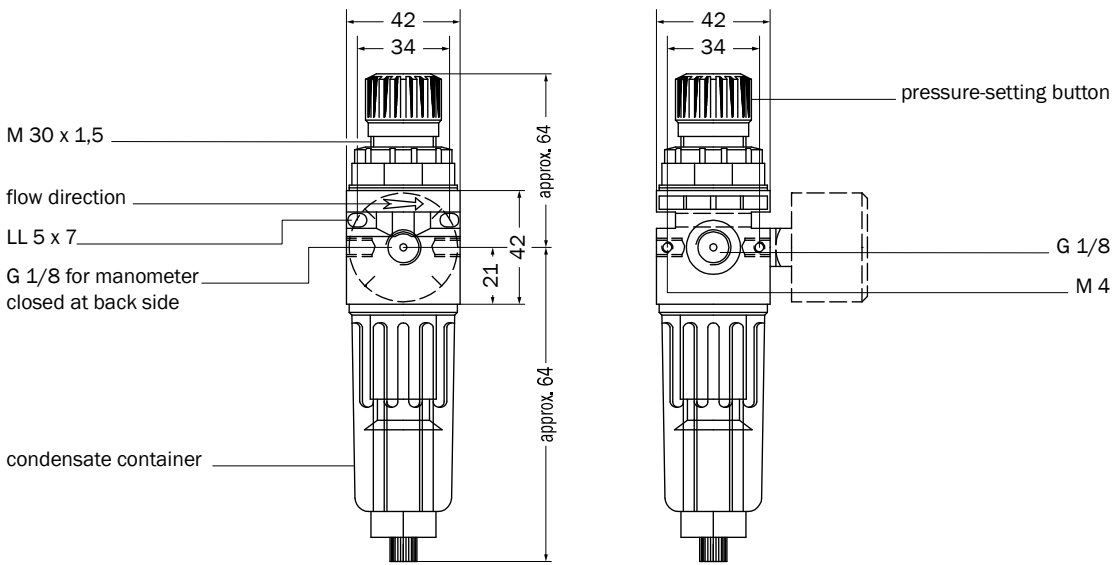


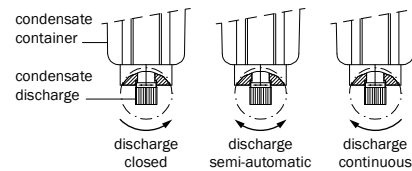
Order designation: Regulator valve MK-06



Compressed air filter

1. Condensate must be drained in due time.

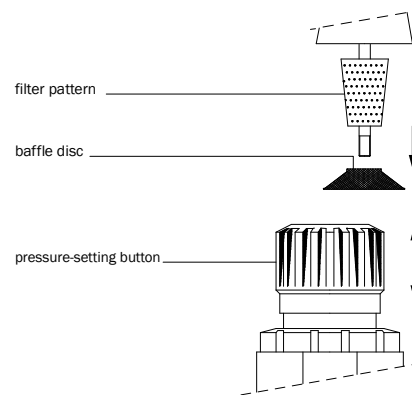
- a. left stop continuous condensate drain
- b. centre position semi-automatic condensate drain
- c. right stop condensate drain closed (manual)



2. Change of filter pattern.

If they are very dirty the filter **patterns** must be changed (to avoid decreased performance).

- a. Adjust air pressure, screw off filter tray and pull it downwards.
- b. Screw off baffle disc, change filter patterns.
- c. Screw on baffle disc.
- d. Clean filter tray (with hot water) and screw it on.



Regulator valve

Operating pressure adjustment.

- ▶ Unlock the pressure setting button by pulling it upwards.
- ▶ clockwise rotation = pressure increase
- ▶ counterclockwise rotation = pressure decrease
- ▶ Arrest the pressure set button by pulling downwards

Operation & Maintenance

separation degree	32 µm
connection size	G 1/8
design	centrifugal system and filter element combined with membrane regulator valve (spring tension controlled) with overpressure protection device
fixation	M 4 x 10
mounting position	preferred
weight (mass)	0,35 kg
condensate draining	manual/ semi-automatic compressed air discharge
max. contents of condensate container	13 cm ³
medium and ambient temperature	V _{min.} = 0 °C V _{max.} = +50 °C

Pneumatic parameters

working pressure area exit	p ₂ = 0,5 - 12 bar
working pressure area entry	p ₂ = 0 - 18 bar
economic flow rate with p ₂ = 6 bar	30 m ³ /h

Technical data