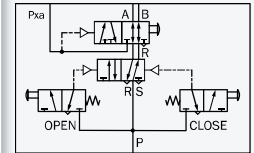
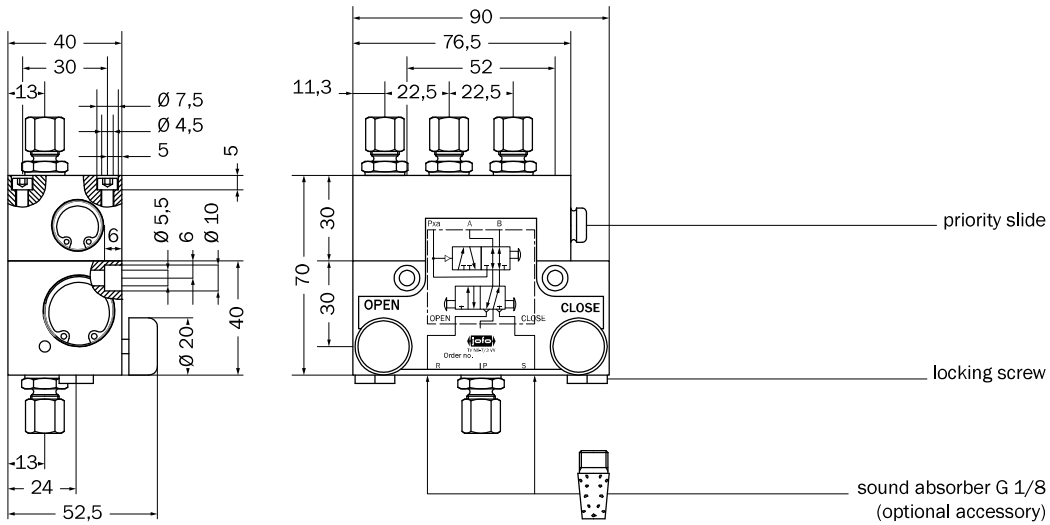


Order designation: TV N_-7/3 W
 Example: TV N6-7/3 W



The cylinder line pressurized with air power is vented until the counter-pulse and then vented. Additionally, the valve has an absolute priority control of CO₂ "Open".

Short description

When the corresponding pushbutton is activated the required cylinder line is pressurized with air power. When Pxa "Open" is pressurized the priority slide is activated by a manual trigger. This blocks the air power. After the venting of Pxa "Open" the priority slide must be repositioned manually.

Operation

Technical data	
medium	a) filtered, dry and unoled compressed air according to DIN ISO 8573-1 b) CO ₂
operating pressure	a) air power 2 – 12 bar b) CO ₂ 12 – 60 bar
test pressure	CO ₂ 90 bar
nominal passage	500 NL/min (with pipe diameter 6 x 1 mm)
connection thread	G 1/8
VdS number	G 510005
ambient temperature	-25 °C to +55 °C
mounting position	preferred
materials	aluminum, niro, Perbunan sealings
maintenance	no

TV N6-7/3 W	connection G 1/8, pipe Ø 6 mm
TV N8-7/3 W	connection G 1/8, pipe Ø 8 mm

Accessories

valve boxes	→chapter 4.5, page 125, "Valve Boxes"
sound absorber	→chapter 4.5, page 127, "Valve Boxes and Door Variants"
	optional