



Order designation: PVZ piston diameter - 91 - stroke - A0 - eyebolt
 Example: PVZ 40 - 91 - 300 - 146 - M8x40 / Ø 6,1

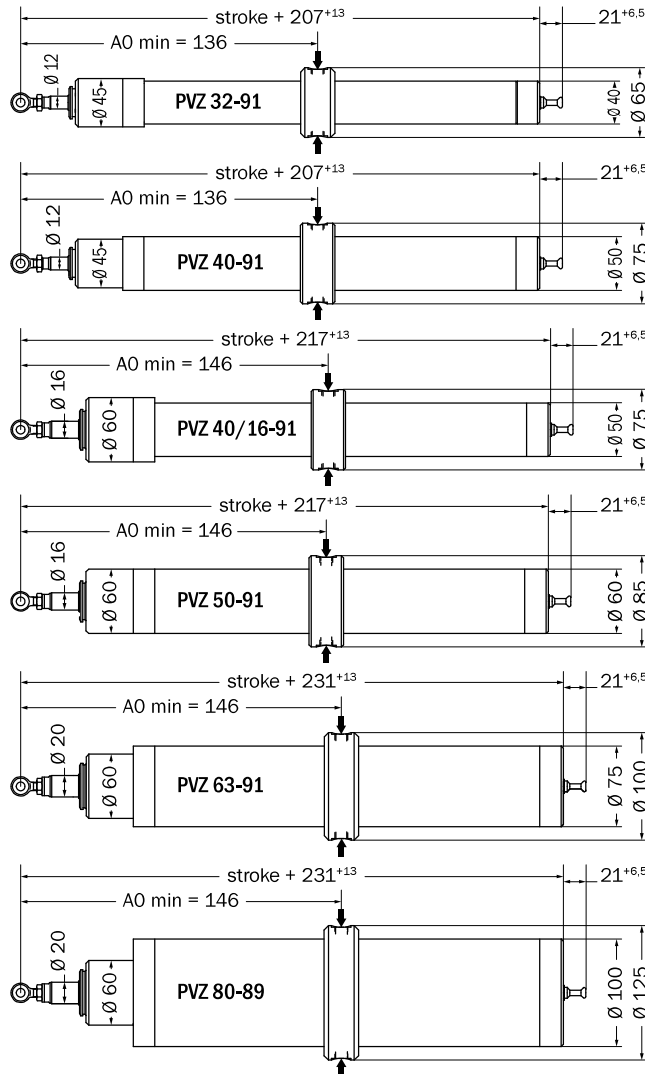
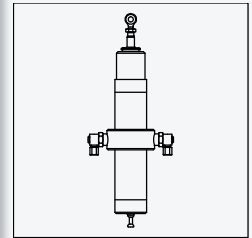
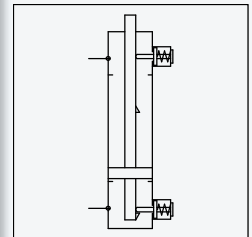


Illustration cylinder type 91



Circuit diagram cylinder type 91



By the pressurization of a "cylinder side" with simultaneous pressure release of the other "cylinder side" a shear/tensile force is performed. The piston is locked in both end positions.

Short description

connection	M 12 x 1 (middle ring)
eyebolt	M 8 x 40 / Ø 6,1 or Ø 8,1 (other eyebolts possible)
stroke and A0	according to selection
VdS number	G 502008 (up to 1.100 mm stroke)

Technical data

→chapter 6.1, page 205, "Accessory Overview"

connection	→chapter 6.1, page 206 (attention: "Close"-side with EV)
pivot support	→chapter 6.2, page 221, "Pivot Support"
bracket	→chapter 6.2, page 226
pipe bracket connection	→chapter 6.2, page 224 and page 225
front bracket	→chapter 6.2, page 223, "Front Bracket"

Accessories