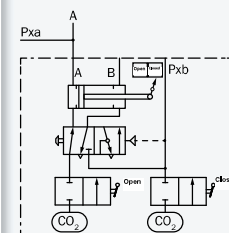
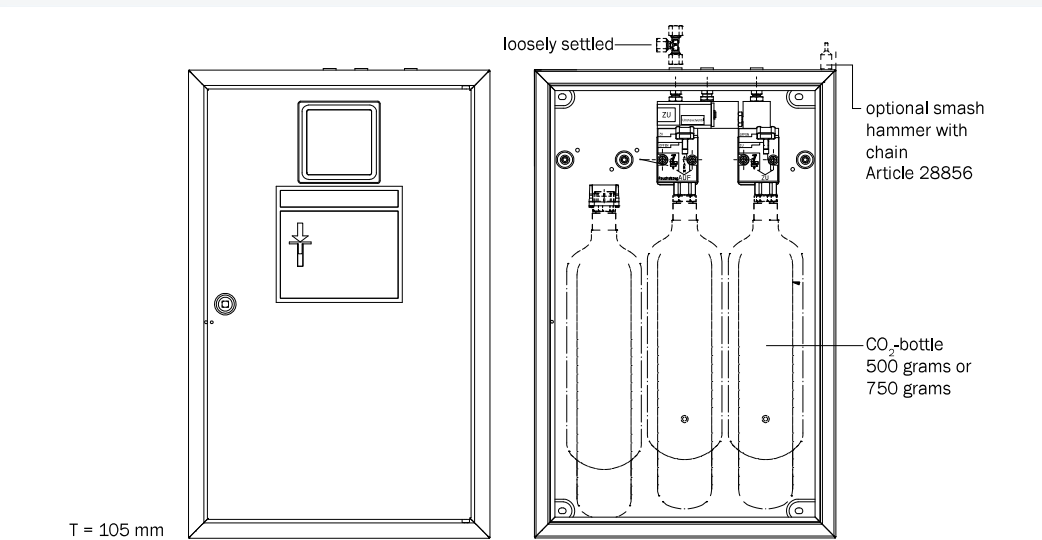


ALARM BOX "OPEN/CLOSE" – AK 73

Order designation: AK 73 / box dimension - (remote activation -) cylinder threads
Example: AK 73 / 1 - Ea 24 V - Si - M 18x1.5



"Open/Close" with ventilation by reversing valve and connection for extension

The AK 73 consists of a steel case, optionally in the dimensions from 1 to 6, and a CO₂-trigger for SHEV "Open". and for SHEV "Close", as well as a reversing valve with visual display and extension connection. The CO₂-triggers are situated on a mounting rail.

By pressing the manual lever of the CO₂-trigger ("Open") the CO₂-bottle is opened and energy is released via "A". By the activation of the second CO₂-trigger ("Close") – the manual lever is positioned hidden behind the door, in order to prevent a fault operation – the energy is released via "B".

The trigger can optionally occur by means of an external control point via remote trigger. The ventilation occurs automatically via the CO₂ reversing valve. The pneumatic visual display shows the activation direction which has just been triggered.

Short description

Break the glass and push the manual lever downwards (→chapter 02, page 25, "Operating Manual CO₂-Triggers" and chapter 02, page 33, "Mounting, Operating and Maintenance Instructions").

Operation

Box dimension	Di. 1	Di. 2	Di. 3	Di. 4	Di. 5	Di. 6
height [mm]	345	440	520	520	700	700
width [mm]	255	255	335	560	335	560
medium	CO ₂					
max. allowed operating pressure	60 bar					
test pressure	90 bar					
materials	aluminum, niro, brass, steel galvanized, sealings NBR					
box colour	RAL 3 000 (Flame red)					
connection	for pipe external diameter of 6 mm (optionally 8 mm available)					
ambient temperature	-25 °C to +55 °C					
maintenance	once a year (→chapter 02, page 33)					
VdS number	G 595012 only with RAL 2011 (deep orange), following prEN 12101/9 ISO 21927-9 : 2012-03					

Technical data

remote trigger	whether pneumatic or electric (compressed gas generator/ magnet trigger), →chapter 02, page 28, "Remote Trigger-AK"
CO ₂ -bottles	→chapter 01, page 10, "CO ₂ -Bottles and Glass Bulbs"
flush frames	→chapter 02, page 29, "Alarm Box for CO ₂ -Triggers"
smash hammer	→chapter 02, page 29, "Alarm Box for CO ₂ -Triggers"

Accessories