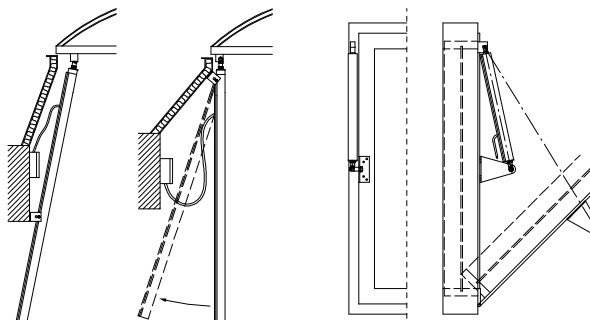

Short description

The electrical motor drive is contained in a robust aluminum box and is ideal for the opening of skylights, light domes and window casements. It can be implemented for the day-to-day ventilation or smoke and heat exhaust ventilators (SHEV). The design of the motor opener with its great variety of accessories allows for a broad range of applications. The drive complies with the fire test requirements (300 °C - 30 min.) according to DIN EN 12101-2.

The motor opener with permanently greased spindle drive is designed with an integrated electronic load disconnection. This limits the lifting force in both stroke directions according to the established value.

Installation

The connection area of the motor supply line is performed in IP 65. The bracket KB 5 is part of the delivery scope (not for JM-DC-B).



Installation of the JM-DC with bracket KB 5 and mounting bracket to a light dome

Installation of the JM-DC-B with angle bracket WK 1 and hinged block to a window casement

Accessories

mounting bracket, hinged block	→chapter 6.2, page 221, "Mounting Bracket FB 6/8"
	→chapter 6.2, page 222, "Hinged Block"
bracket	→chapter 6.2, page 230, "Bracket KB 5 for Motor Opener 24 V DC"
	→chapter 6.2, page 233, "Angle Bracket WK 1"
SHEV control unit	→chapter 11.5, page 427 and following, "SHEV Control Center _____"